



GAT MONTHLY MEMBERSHIP PROGRESS REPORT

Results as of: 8/31/2023

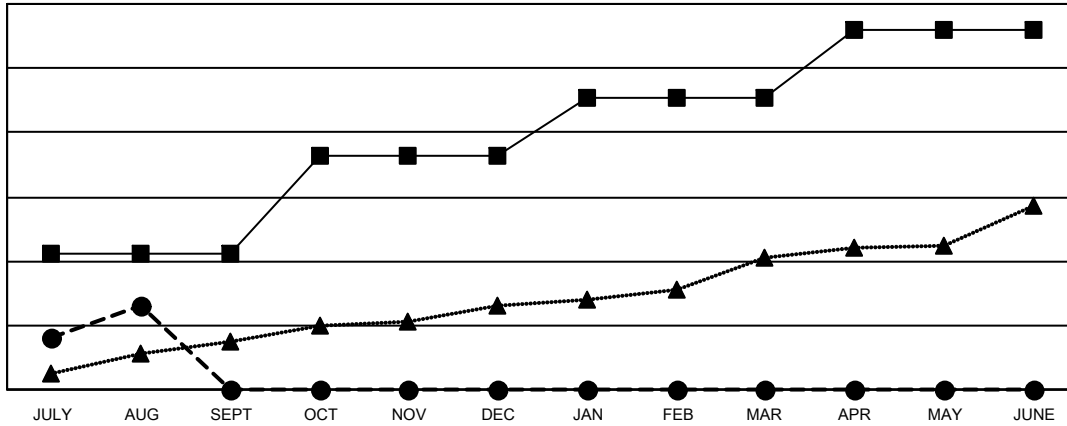
Multiple District 321

LOCATION: INDIA

Clubs			
RESULTS FOR 2023-2024			
QUARTER	NEW CLUB GOAL	NEW CLUBS	DROPPED CLUBS
JULY/AUG/SEPT	42	26	8
OCT/NOV/DEC	31	0	0
JAN/FEB/MAR	18	0	0
APR/MAY/JUNE	21	0	0

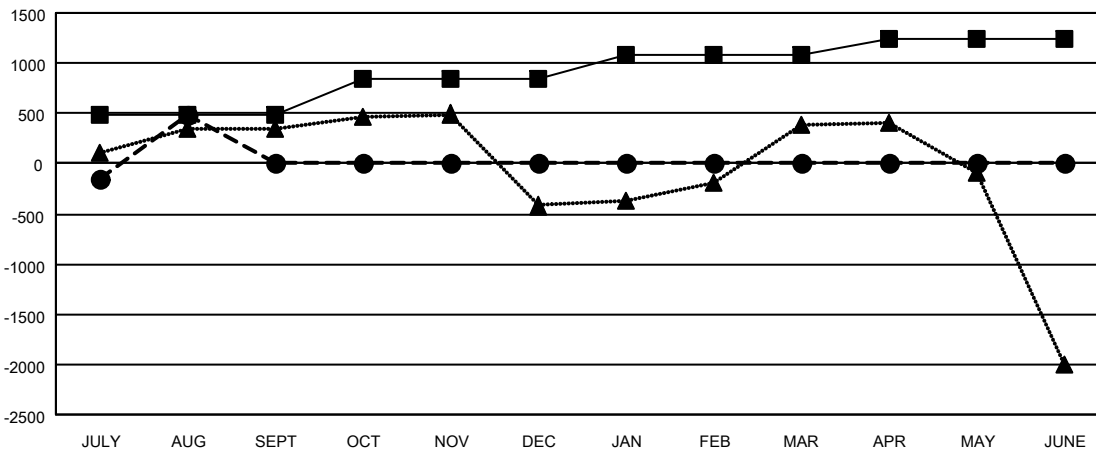
Members			
RESULTS FOR 2023-2024			
QUARTER	MEMBER GROWTH NET GOAL	MEMBER GROWTH ACTUAL	DROPPED MEMBERS ACTUAL (including transfers)
JULY/AUG/SEPT	480	2,239	1,393
OCT/NOV/DEC	370	0	0
JAN/FEB/MAR	235	0	0
APR/MAY/JUNE	165	0	0

GOALS AND ACTUAL NEW CLUBS CUMULATIVE



- - CURRENT YEAR GOALS FOR NEW CLUBS
- - CURRENT YEAR ACTUAL NEW CLUBS
- ▲ - LAST YEAR ACTUAL NEW CLUBS

GOALS AND ACTUAL MEMBERS CUMULATIVE



- - MEMBER GROWTH NET GOAL
- - MEMBER GROWTH ACTUAL
- ▲ - LAST YEAR MEMBERSHIP ACTUAL

DROPPED CLUBS: 8	
DROPPED MEMBERS	
DECEASED	34
CLUB CANCELLED	53
OTHER	1,306
TOTAL	1,393

325 CLUBS OF 1154 ADDED 1 OR MORE NEW MEMBERS

[CLICK HERE FOR CUMULATIVE MEMBERSHIP DATA](#)

GENDER DISTRIBUTION	
MALE	21,871 (68.76%)
FEMALE	9,922 (31.19%)
NON BINARY	0 (0.00%)
PREFER NOT TO ANSWER	14 (0.04%)
TOTAL FAMILY UNIT MEMBERS	18,698
FAMILY MEMBERS PAYING HALF DUES	11,303